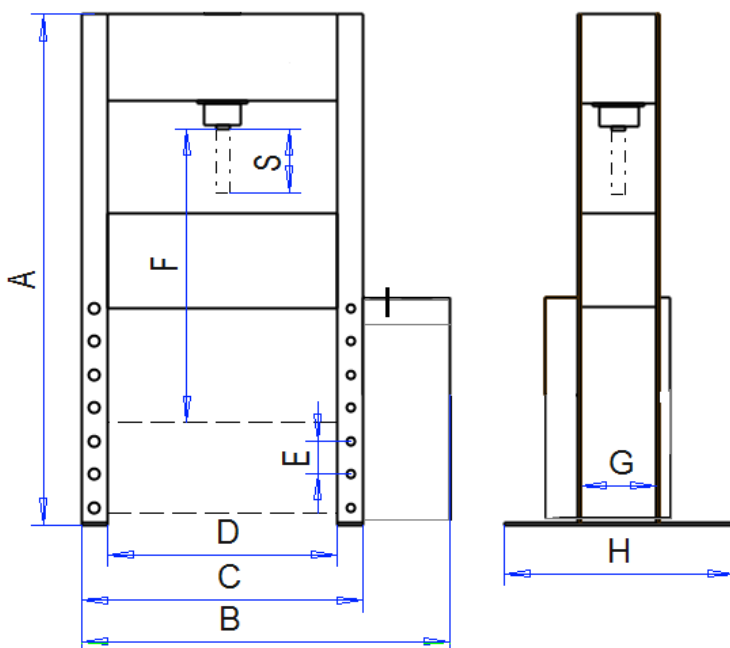




# KR1500

- Workshop press with motorised pump unit
- Max. pressing force 150ton
- Adjustable pressing force (6-150t)
- Double acting cylinder
- Pressing speed 4 mm/s, return speed 4,7 mm/s
- Stroke 300 mm
- Electric motor 5,5 kW
- Set of V-blocks
- Force gauge 0-1500 kN
- Accessory for adjusting the table includes
- Reservoir 40 liters
- Weight about 1420 kg
- Built in accordance with the latest safety and CE specifications.



A	2365
B	1700
C	1300
D	1000
E	130
F	810
G	380
H	900
S	300



### Optional accessories:

- Polycarbonate press guard
- Pedal control
- Sideway movable cylinder
- Adjustable pressing speed
- Press brake tool



**VAKOMET**

**Seinäjoki**  
Rajatie 46  
FIN-60101 Seinäjoki

Sales +358 50 5166425

**Vaasa**  
Laturintie 4  
FIN-65101 Vaasa

Sales +358 44 550 2985

Contact via email:  
[info@vakomet.fi](mailto:info@vakomet.fi)